

ONTEACH CONSULTING (OPC) PVT. LTD.

ADDRESS :

**2ND FLOOR, NOVEL MSR BUILDING,
SUBBAIAH REDDY COLONY,
MARATHAHALLI, BENGALURU,
KARNATAKA - 560037**



www.onteach.in

ONTEACH INTO

**ONLINE
EDUCATION**

&

**IT
RECRUITMENT**





OUR WORK PLACE



SHORT TERM INTERNSHIPS

{1 Month duration}

BOTH ONLINE AND OFFLINE

(We suggest online)



YOU CAN CHOOSE **ONE** AMONG THESE

01 FRONT END WEB DEVELOPMENT

02 DEVOPS

03 CLOUD COMPUTING

04 BACK END WEB DEVELOPMENT

05 PYTHON

06 MONGO DB



We Suggest..

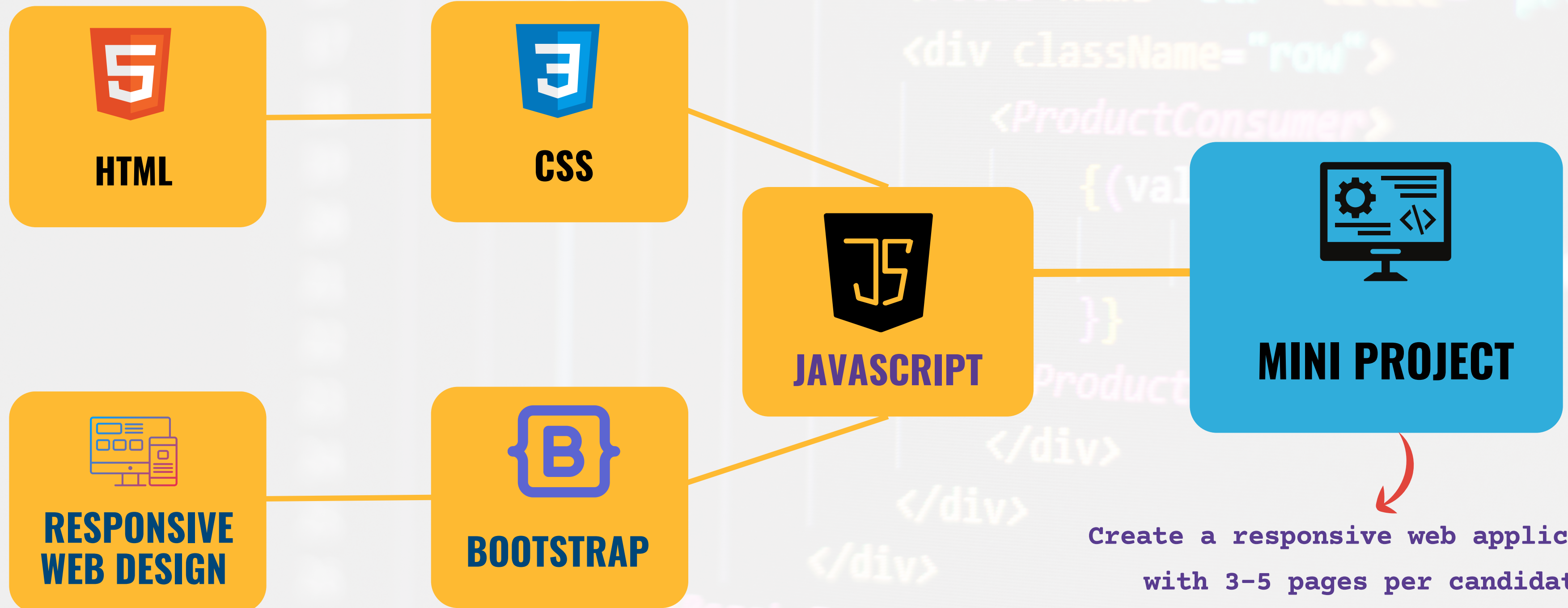
FULL-STACK DEVELOPMENT

(ONLY FRONT END) SINCE IT'S A SHORT TERM INTERNSHIP

```
public function new_rename()  
{  
    $bar = new ProgressBar($this->output, 96);  
    $bar->setFormat('debug');  
    $bar->setBarCharacter('<comment>=</comment>');  
    $bar->setBarWidth(50);  
    $bar->start();  
  
    $products = Product::select()  
        ->where('cat_id', 162)  
        ->where('mirror', 0)  
        ->get();  
  
    foreach ($products as $product) {  
        $img_cuts = explode( delimiter: '.', $product->img );  
        $img_cut = $img_cuts[0];  
        $min_file = glob( pattern: $prod_path . $img_cut . '*.*' );  
        $big_file = glob( pattern: $prod_path . $img_cut . '*.*' );  
        rename( current($min_file), newname: $prod_path . $img_cut . 'temp_min' );  
        rename( current($big_file), newname: $prod_path . $img_cut . 'temp_big' );  
  
        if( !file_exists( filename: public_path( 'imgs/products/' ) . $img_cut . 'temp_min' ) )  
        {  
            DB::table('products')->where('id', $prod->id)->update(['mirror' => 1]);  
        }  
        else{  
            DB::table('products')->where('id', $prod->id)->update(['mirror' => 1]);  
        }  
    }  
}
```

WHAT DO WE COVER IN THIS INTERNSHIP ?

(High level)



Create a responsive web application with 3-5 pages per candidate.

We are offering this internship at a..

Discounted Price of



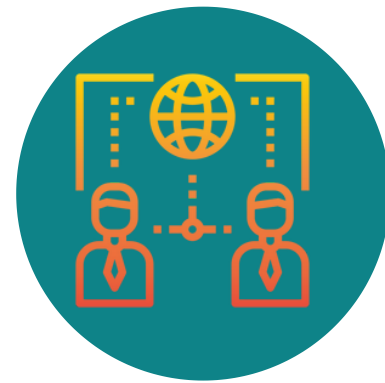
3000/-



How these internships going to help students ?

E2E Projects

Incorporate end-to-end projects for confident **Technical discussions** in interviews.



Career Pathway Clarity

We offer students clarity on **diverse career paths** within their field of study through internships and courses.

Real Time scenarios

We offer **practical training** with Real-time scenarios and mock interviews for comprehensive preparation.



Certification

Upon completion of the course, students will receive a **certification**.

PLACEMENT SUPPORT



PLACEMENT SUPPORT

Conducting Mock Interviews with complex Interview questions



Job Application support, including job search strategies



Guidance on Resume preparation



Access to Industry Network



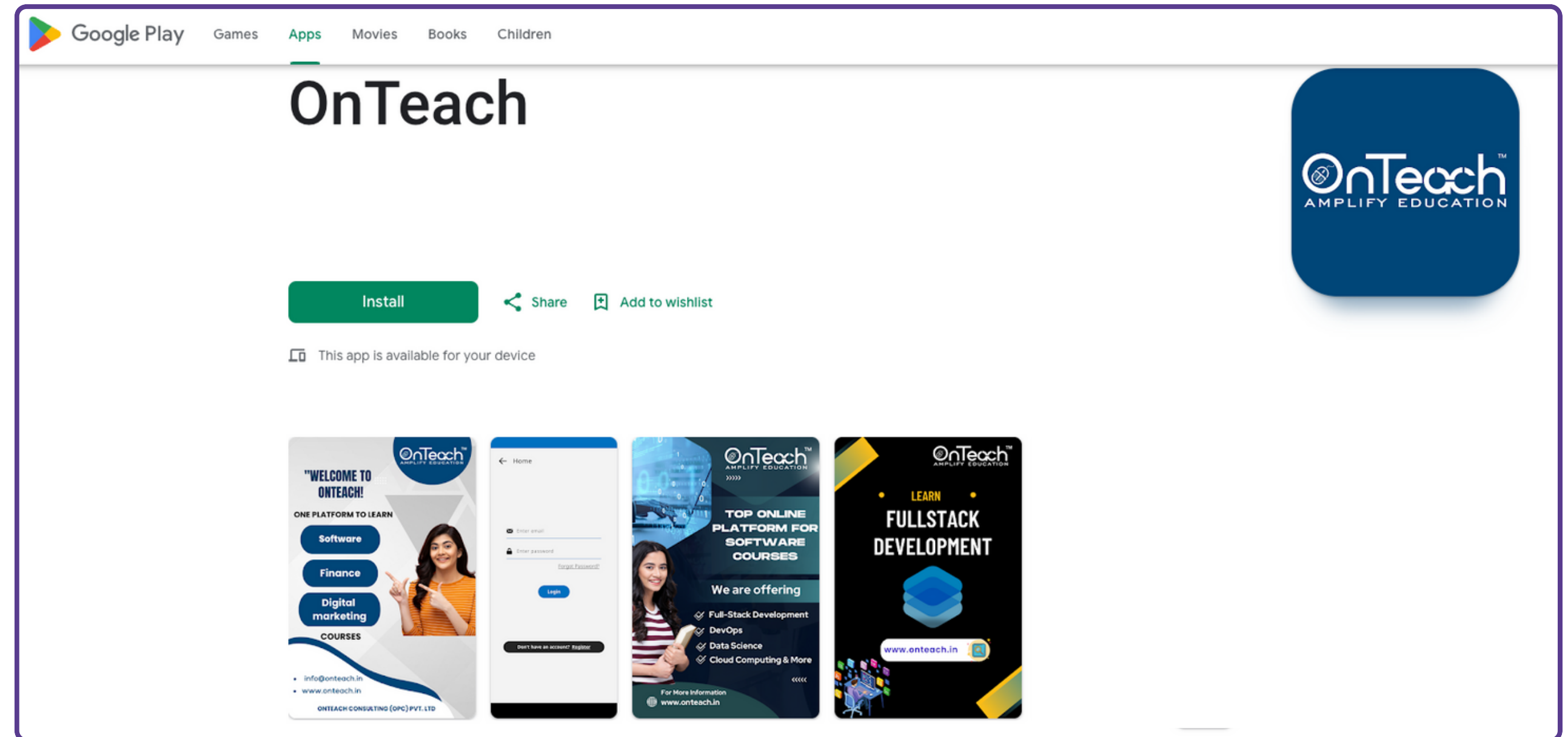
LinkedIn profile creation



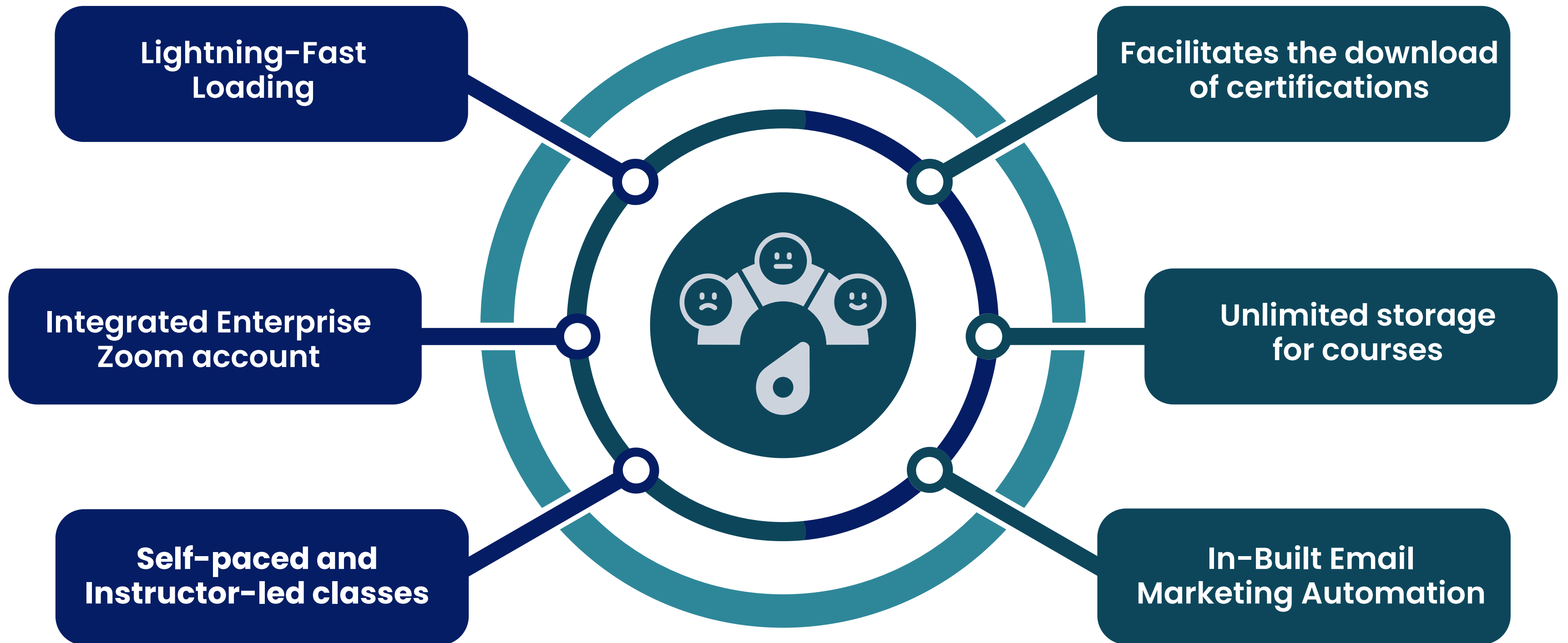
Life Time access to OnTeach's Tech community

OUR PLAY STORE APP ENABLES STUDENTS TO LEARN ANYTIME, ANYWHERE, EVEN ON MOBILE DEVICES.

Play Store App



OnTeach Platform Capabilities



THANK YOU

FOR LONG TERM ASSOCIATION



+91-81052 85657



WWW.ONTEACH.IN



**MARATHAHALLI, BENGALURU,
KARNATAKA-560037**

